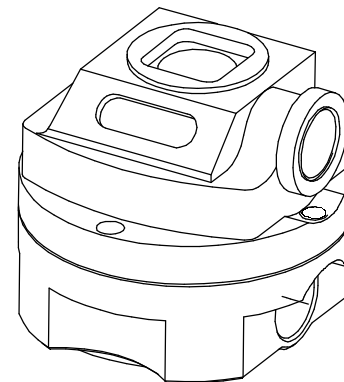
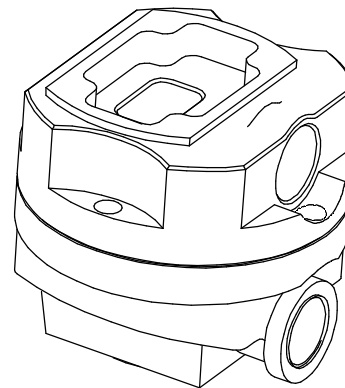
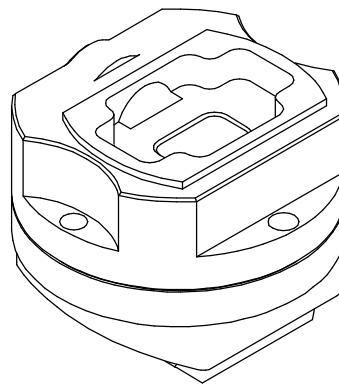
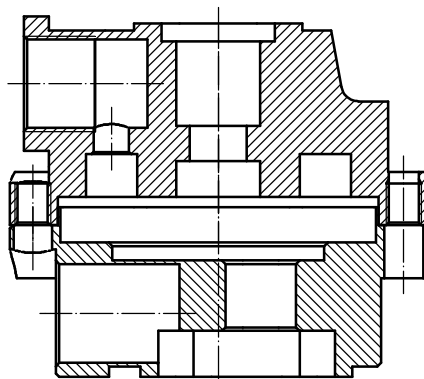


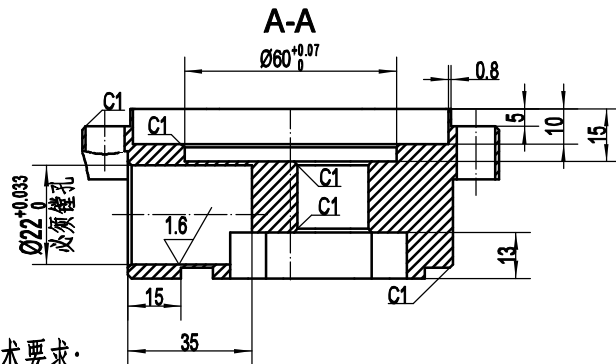
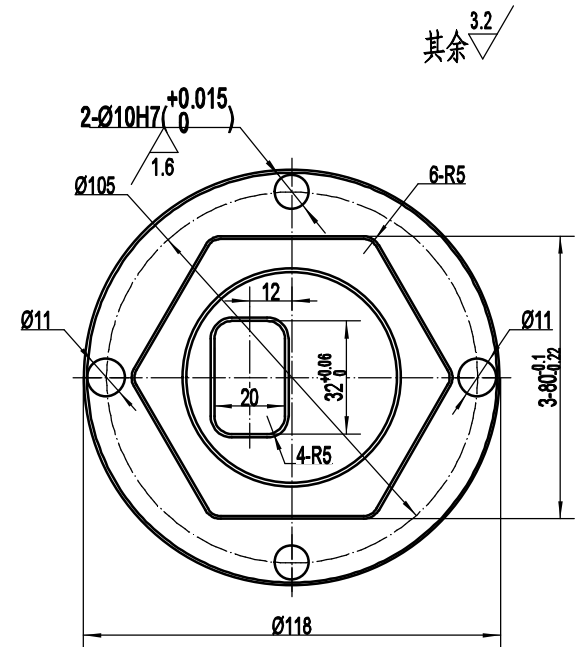
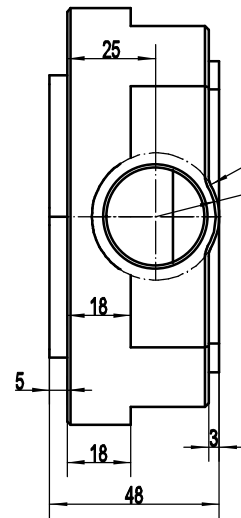
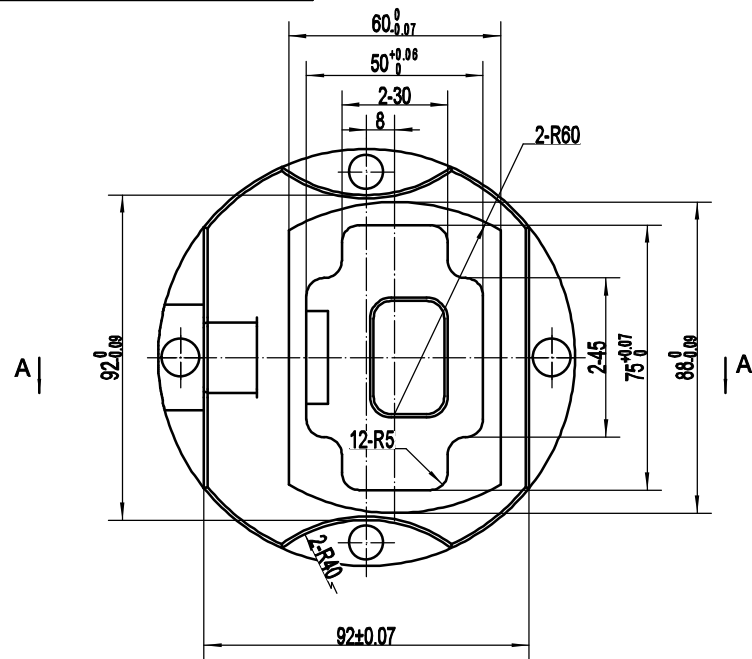
A-A



- 技术要求:  
 1、件1与件2装配成形, 间隙 $0.1\sim0.35$   
 2、件1与件2最大轮廓外形错位不大于 $0.4$

制图			装 配 图	1:2
校核				





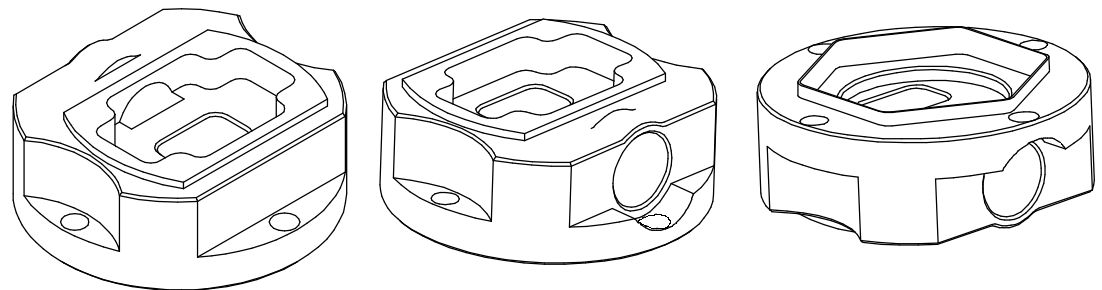
技术要求:

1. 锐角倒钝

2. 未注尺寸公差按GB/T1804-m;

GB/T1804未注尺寸公差摘录

公差等级	基本尺寸分段			
	0.5-3	3-6	6-30	30-120
中等m	±0.1	±0.1	±0.2	±0.3



制图			2-2	1:2
校核				材料: 45钢