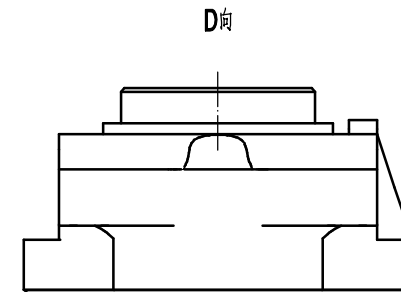
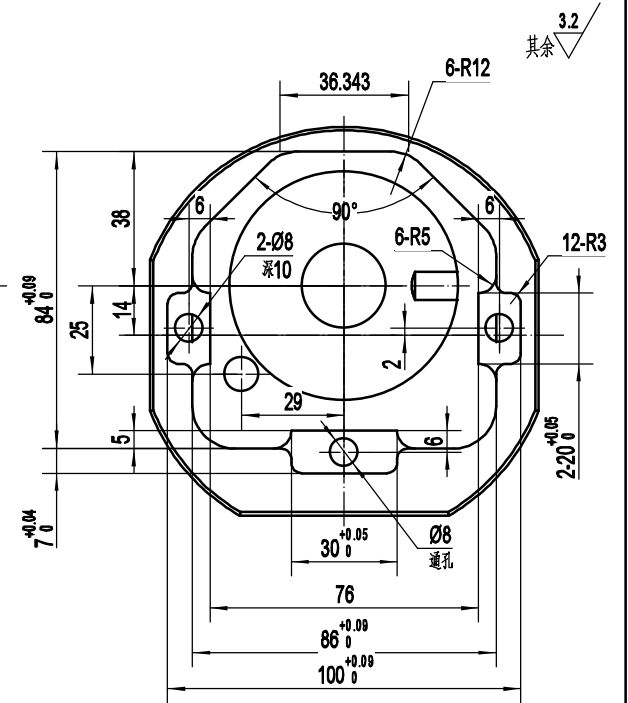
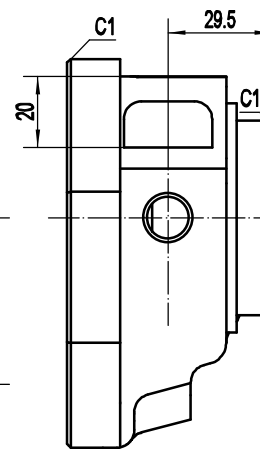
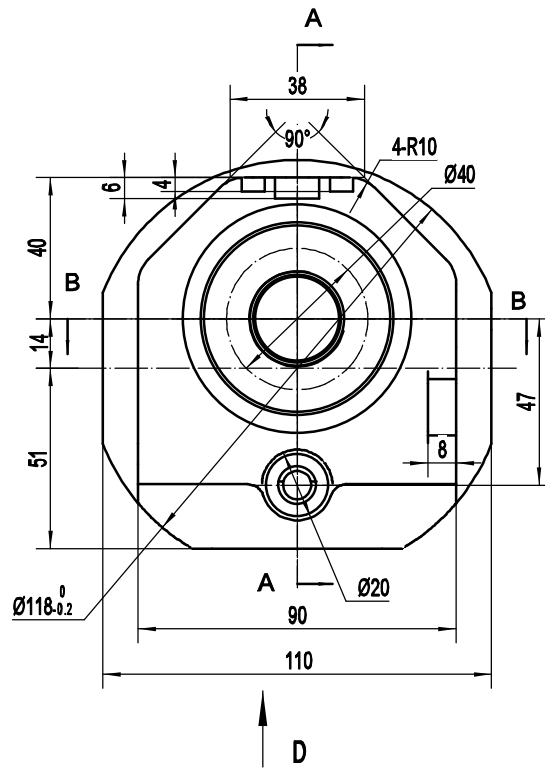
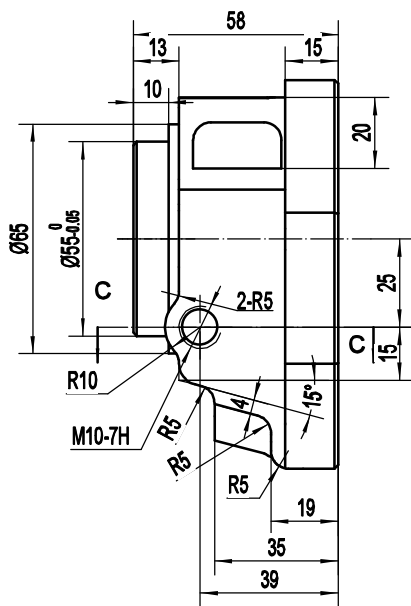


技术要求:
 1、件1与件2装配成形
 2、件1与件2最大轮廓外形错位不大于0.4

制图			装配图	1:2
校核				



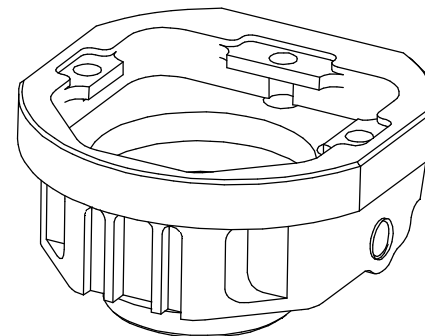
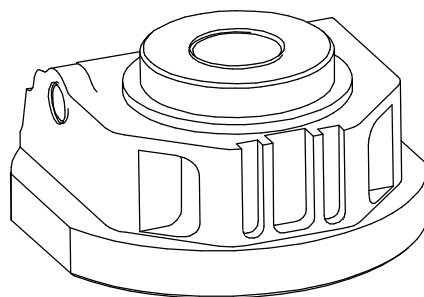
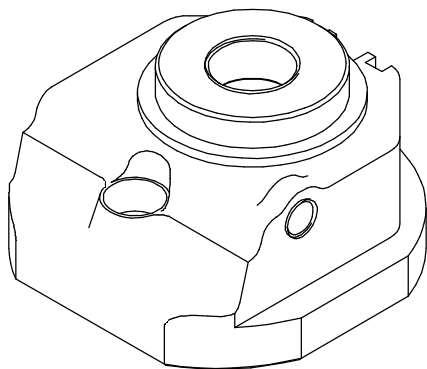
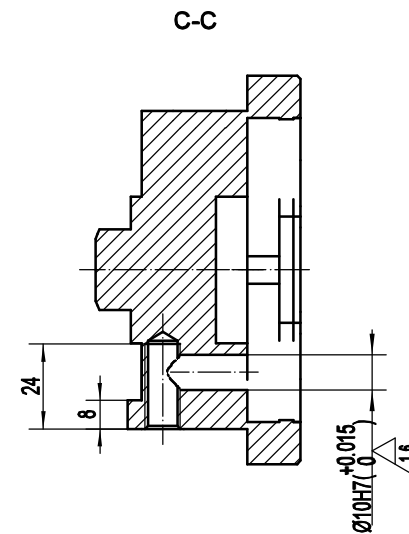
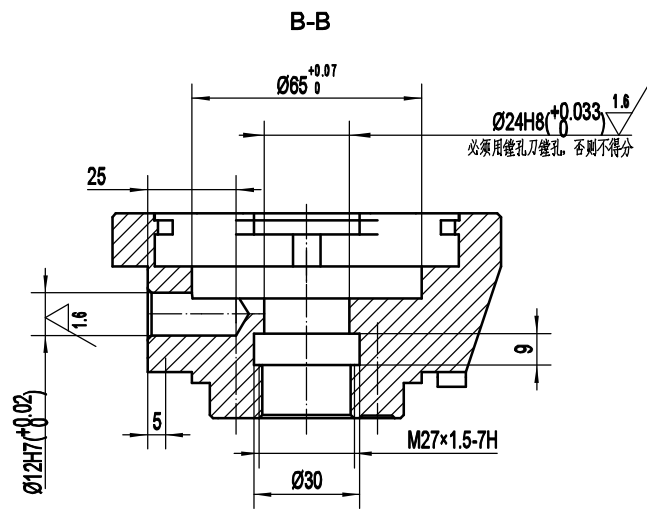
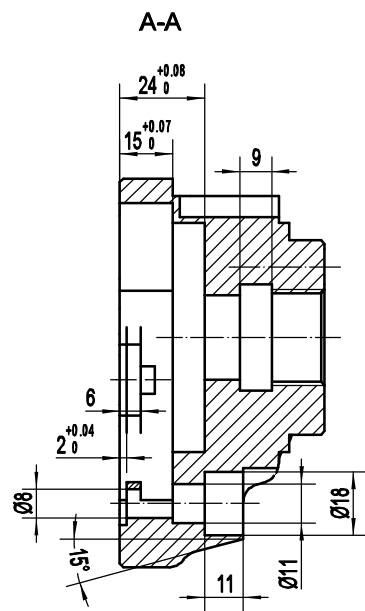
技术要求:

1. 锐角倒钝
2. 未注尺寸公差按GB/T1804-m;

GB/T1804未注尺寸公差摘录

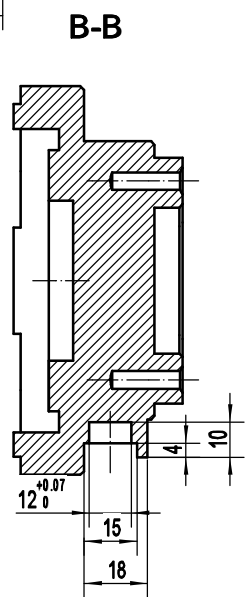
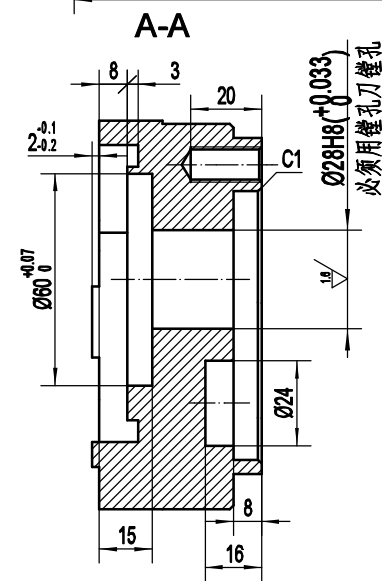
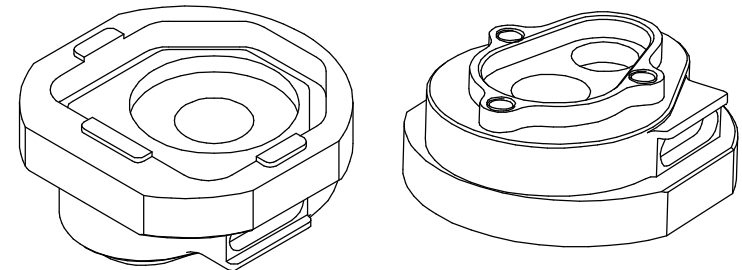
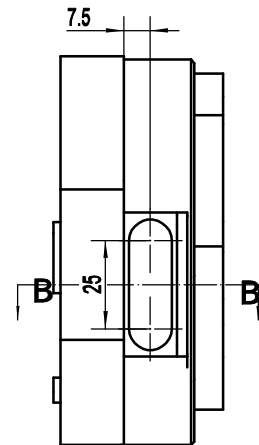
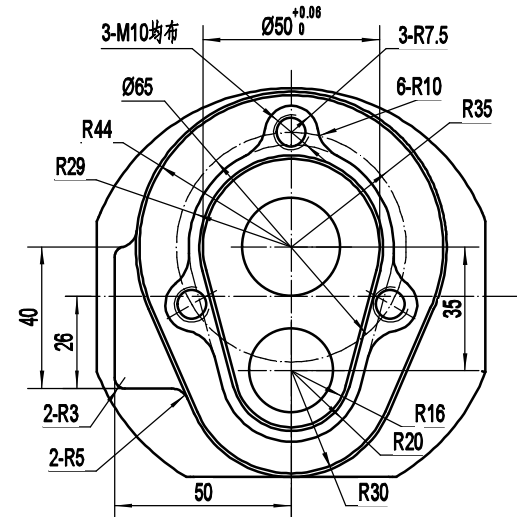
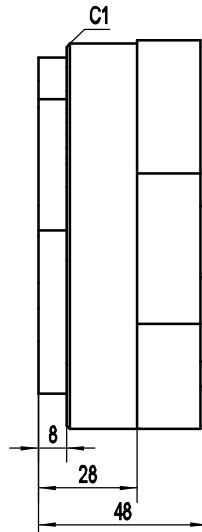
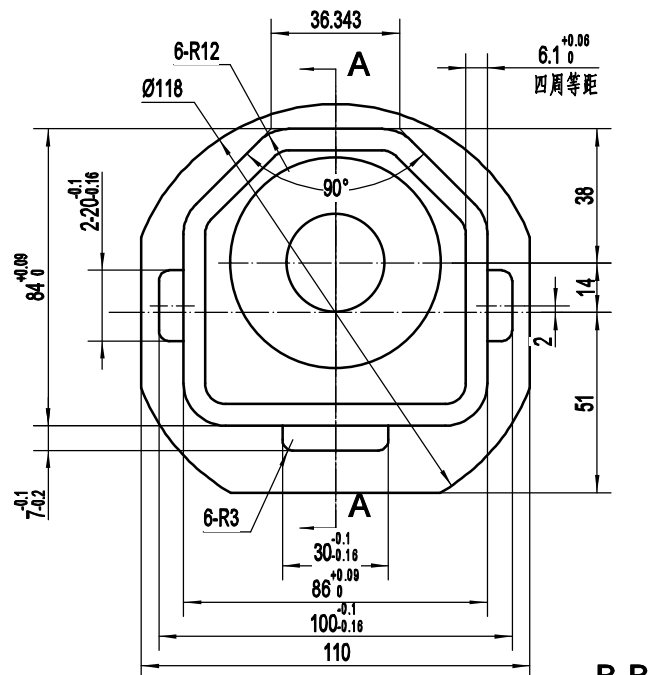
公差等级	基本尺寸分段		
	0.5-6	6-30	30-120
中等m	±0.1	±0.2	±0.3

制图			1-1	1:2
校核				材质: 硬铝



制图			1-1	1:2
校核				材质: 硬铝

其余 $\sqrt{3.2}$



技术要求:

- 1. 锐角倒钝
- 2. 未注尺寸公差按GB/T1804-m;

GB/T1804未注尺寸公差摘录

公差等级	基本尺寸分段		
	0.5-6	6-30	30-120
中等m	± 0.1	± 0.2	± 0.3

制图		1-2	1:2
校核			材料: 45